

AUSTAL OFFSHORE PATROL 60

SUBSURFACE VARIANT



Principal Dimensions	
Hull material	Steel
Length overall	60.0 metres
Beam (overall)	10.6 metres
Draft (approx.)	3.0 metres

Communication & Sensors	
Communication system	Secure/Non-secure voice and data over VHF, UHF, SATCOM and Sea Boat's Situational Awareness
Navigation	Integrated Bridge System including: Radars, 2 x ECDIS, 2 x Gyro Compass, Secure AIS, 2 x DGPS, EOSS and VDR
Sonar	Hull Mounted Mine Avoidance Sonar and Towed Array Sonar (Towed Reelable Active Passive Sonar (TRAPS))

Additional Features	
Motion control system	Austal 2 x 3.25m² Roll fins, 2 x 4.5m² Trim Flaps
Combat Information System	CIC room with 4 consoles

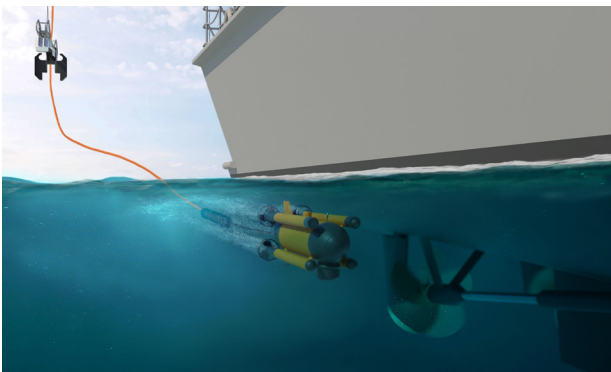
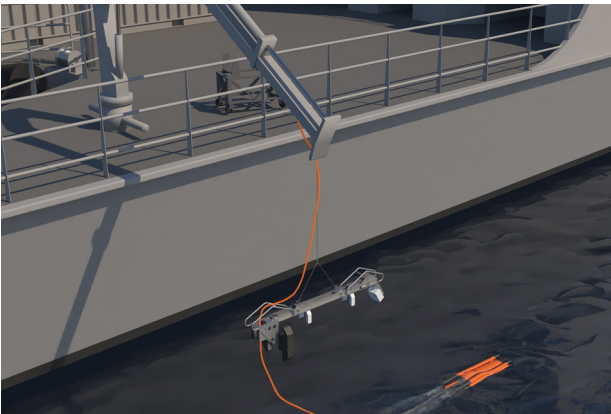
Deployable Mission Systems	
Sea boats	1 x 6.35m WorkRibs Fast Rescue Boat (15pax)
Unmanned Vehicles	Aft flight deck accommodates compact to mid-sized Vertical Takeoff and Landing and fixed wing Unmanned Air Systems Aft deck also accommodates Mine Detection Unmanned Underwater Vehicle(s)

Weapons and Countermeasures	
Primary	2 x 12.5mm Machine Guns (forward)
Countermeasures	Water Cannon and Drone Countermeasure System

Propulsion	
Main engines	2 x Caterpillar 3516C 2 x 2,525 kW @ 1,800 rpm
Gearboxes	2 x ZF 9055A
Propellers	2 x fixed pitch
Bow thruster	HRP 2001 TT(160 kW)

Performance	
Speed	23.5 knots
Range at 12 knots	2500 nautical miles

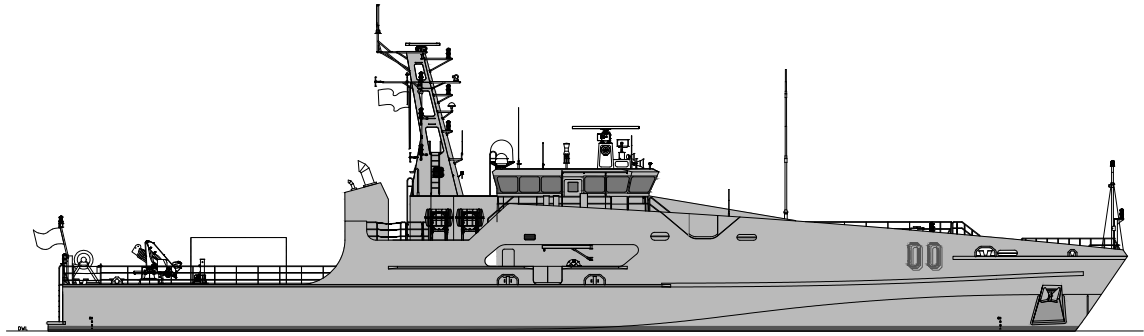
Classification	
Det Norske Veritas ✱1A1 LC, PATROL, EO, BIS, RP, NAUT-HSC, RADHAZ, SAM	



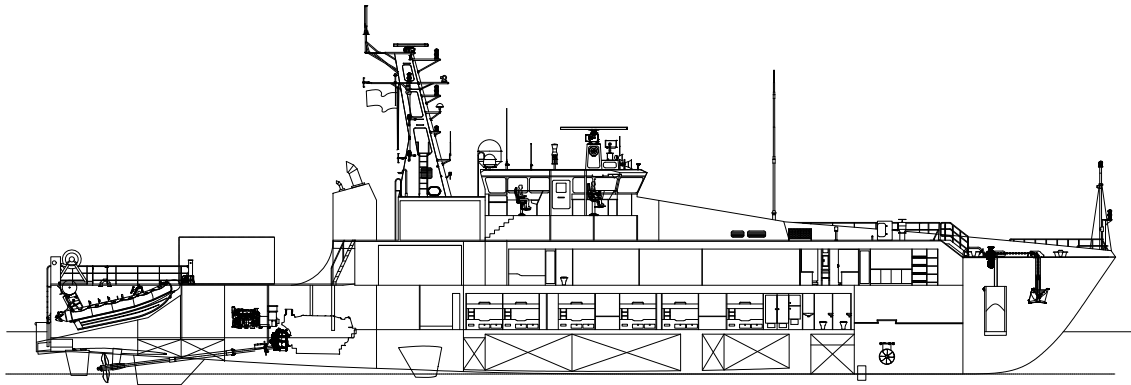
AUSTAL OFFSHORE PATROL 60

SUBSURFACE VARIANT

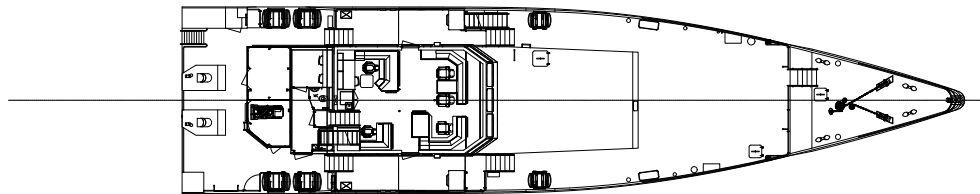
PROFILE



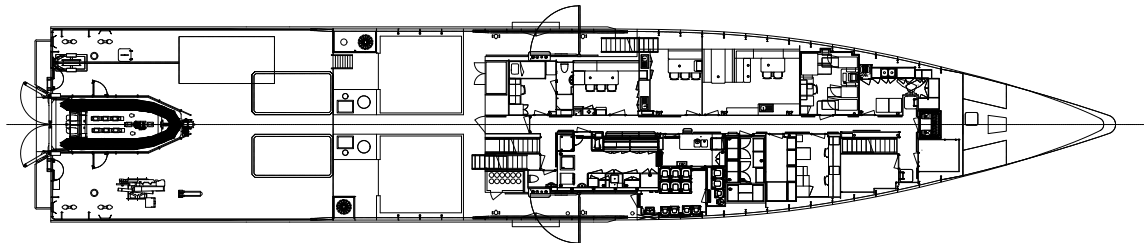
PROFILE @
CENTRELINE



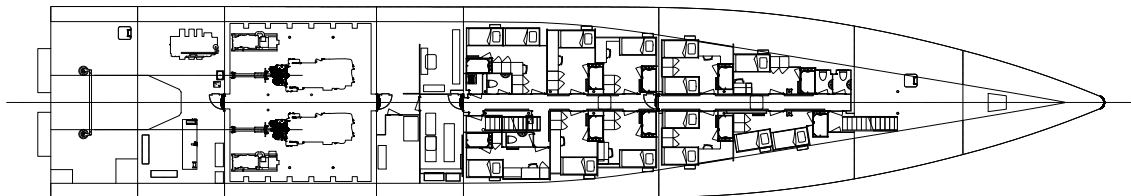
BRIDGE DECK



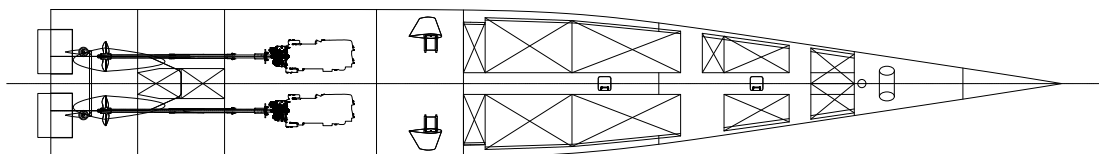
MAIN DECK



LOWER DECK



HULL



Subsurface variant shown with two engines fitted as standard