

# AUSTAL OFFSHORE PATROL 60

## MARITIME SECURITY VARIANT



### PRINCIPAL DIMENSIONS

Hull material	Steel
Length overall	60.0 metres
Beam (overall)	10.6 metres
Draft (approx.)	3.0 metres

### COMMUNICATION & SENSORS

Communication system	Secure/Non-secure voice and data over VHF, UHF, SATCOM and Sea Boat's Situational Awareness
Navigation	Integrated Bridge System including: Radars, 2 x ECDIS, 2 x Gyro Compass, Secure AIS, 2 x DGPS, EOSS and VDR

### ADDITIONAL FEATURES

Motion control system	Austal 2 x 3.25m <sup>2</sup> Roll Fins, 2 x 4.5m <sup>2</sup> Trim Flaps
Combat Information System	CIC room with 4 consoles

### DEPLOYABLE MISSION SYSTEMS

Sea boats	1 x 6.35m WorkRibs Fast Rescue Boat (15pax)
Unmanned Vehicles	Aft flight deck accommodates compact to mid-sized Vertical Takeoff and Landing and fixed wing Unmanned Air Systems

### WEAPONS AND COUNTERMEASURES

Primary	1 x 30mm or 40mm Main Gun
Secondary	2 x 12.5mm Machine Guns (forward), 2 x 30mm RWS (aft)
Countermeasures	Decoy Launching System, Water cannon and Drone Countermeasure System

### PROPULSION

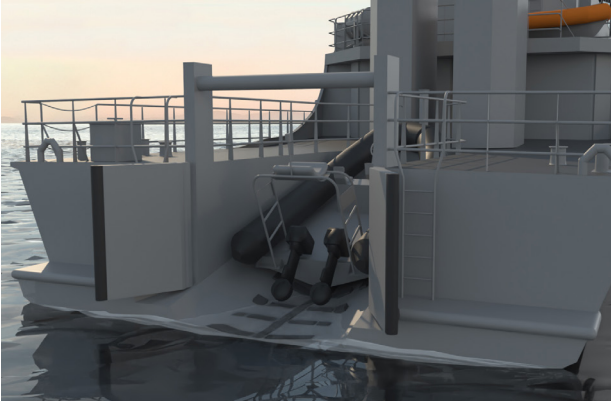
Main engines	2 x Caterpillar 3516C 2 x 2,525 kW @ 1,800 rpm
Gearboxes	2 x ZF 9055A
Propellers	2 x fixed pitch
Bow thruster	HRP 2001 TT(160 kW)

### PERFORMANCE

Speed	23.5 knots
Range at 12 knots	2500 nautical miles

### CLASSIFICATION

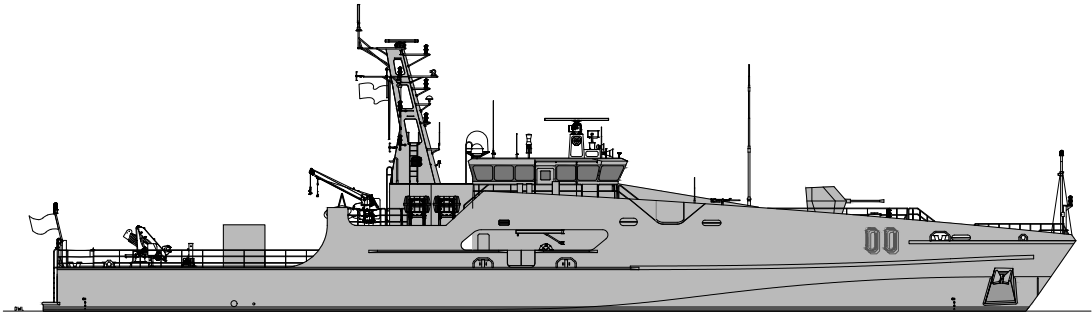
Det Norske Veritas  
✘ 1A1 LC, PATROL, EO, BIS, RP, NAUT-HSC, RADHAZ, SAM



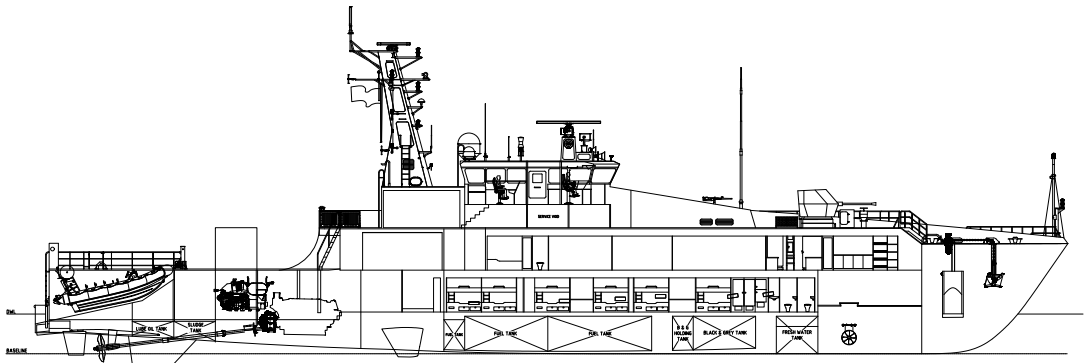
# AUSTAL OFFSHORE PATROL 60

## MARITIME SECURITY VARIANT

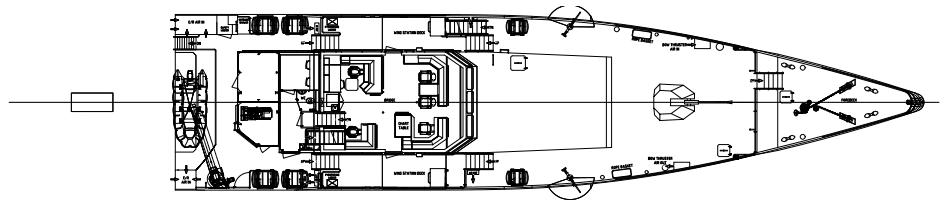
PROFILE



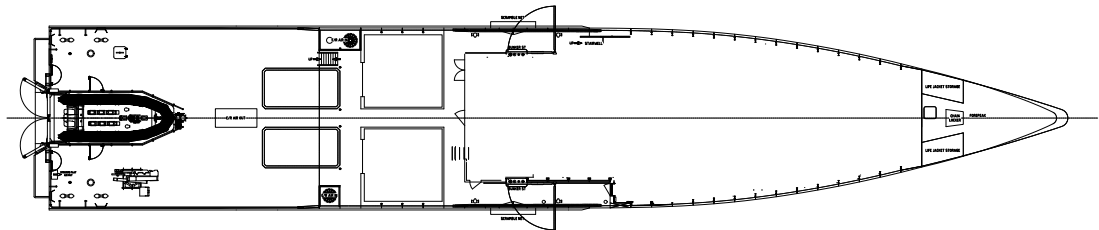
PROFILE @  
CENTRELINE



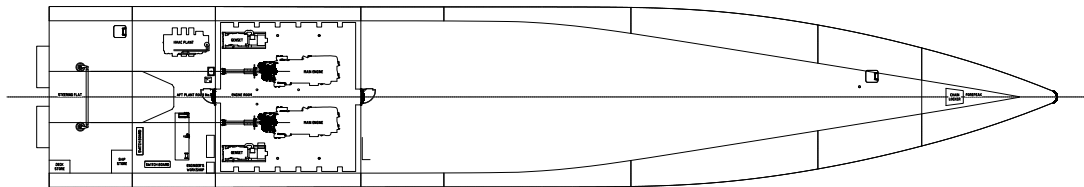
BRIDGE DECK



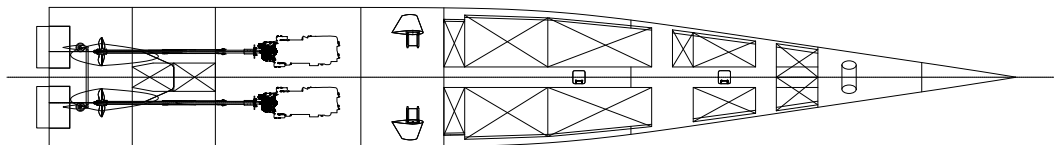
MAIN DECK



LOWER DECK



HULL



*Maritime Security variant shown with two engines fitted as standard*