

OFFSHORE PATROL 83

OFFSHORE PATROL VESSEL



PRINCIPAL DIMENSIONS

| | |
|----------------------|-------------|
| Length overall | 83.4 metres |
| Length (waterline) | 79.2 metres |
| Beam (moulded) | 13.3 metres |
| Hull depth (moulded) | 6.5 metres |
| Hull draft | 4.0 metres |

COMMUNICATION & SENSORS

HF, VHF, UHF & SATCOM communications, Combat Management System, Radar Electro Optical Director, 2D air/surface radar & IFF, Radar ESM, and capacity for active/passive sonar towed array

ACCOMMODATION

| | |
|------------|----|
| Berths | 52 |
| Additional | 20 |

ARMAMENT

76mm main gun, 2 x 25mm Remote Weapon System (RWS), and mounts for 2 x .50 Cal Heavy Machine Guns at midships

ADDITIONAL FEATURES

| | |
|--------------|---------------------------------------------------------------------------------------------------------------|
| Flight Deck | Helicopter landing and take-off capability to suit 10 tonne helicopter (nominally AW159) and capacity for UAS |
| Ship's Boats | 11m RHIB/sea boat in stern launch dock 7m RHIB/sea boat side launch |

PROPULSION

| | |
|--------------|---------------------------------------|
| Main engines | 2 x Caterpillar C280-16 or similar |
| Gearboxes | 2 x Reintjes LAF 5645 SISO or similar |
| Propellers | 2 x Fixed Pitch Propellers (FPP) |

PERFORMANCE

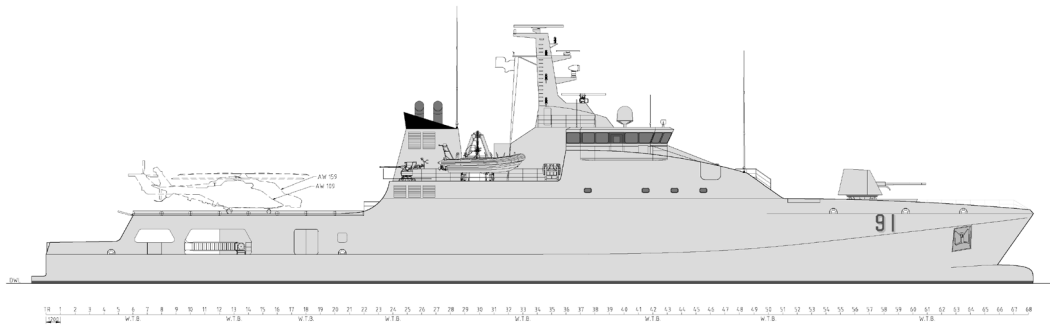
| | |
|-------|---------------------------------------------|
| Speed | 22 knots at 85% MCR |
| Range | >3,500 nm (at a cruising speed of 12 knots) |

CLASSIFICATION

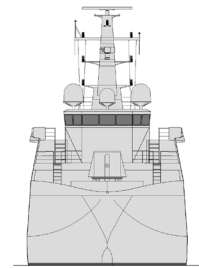
Lloyd's Register
✶100A1 NS(SSC) Mono (Offshore Patrol Vessel) SA2, AIR



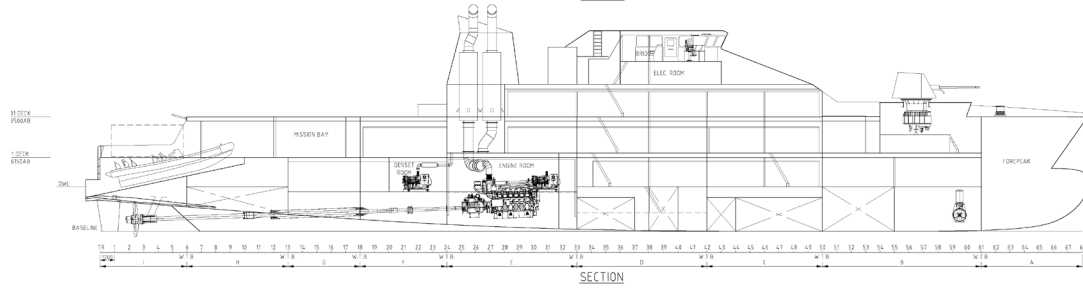
OFFSHORE PATROL 83



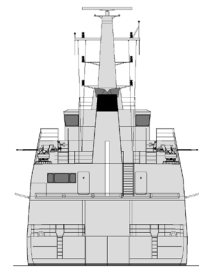
PROFILE



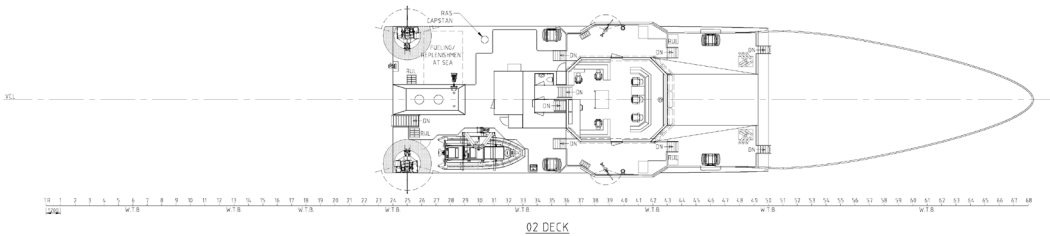
FWD ELEVATION



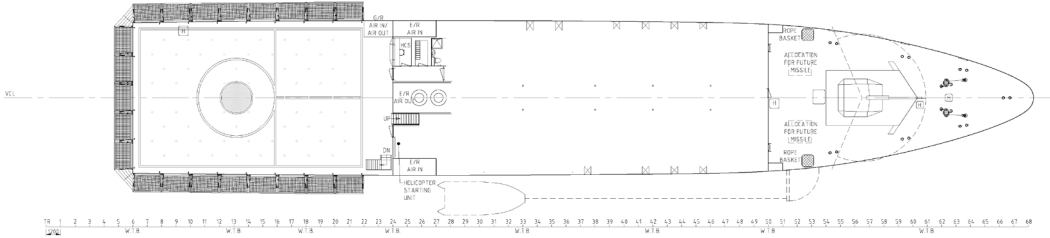
SECTION



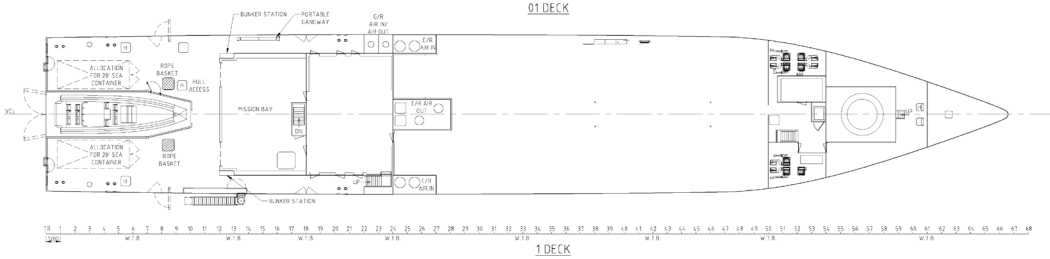
AFT ELEVATION



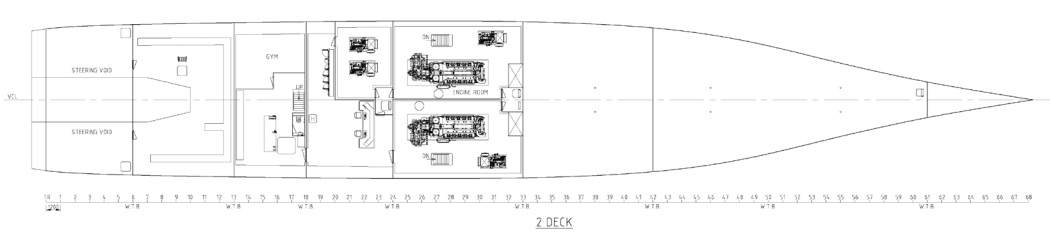
02 DECK



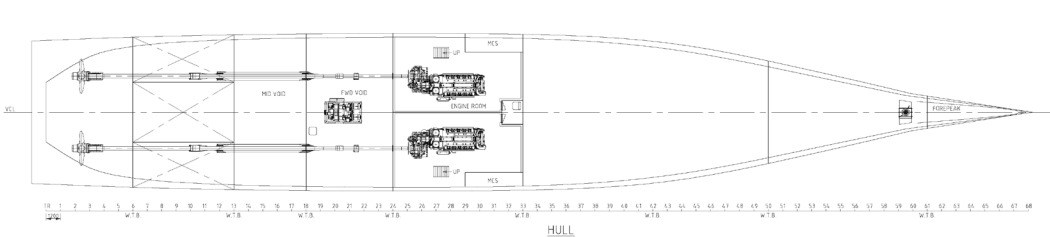
01 DECK



1 DECK



2 DECK



HULL