

AUSTAL OFFSHORE PATROL 60

SUBSURFACE VARIANT



PRINCIPAL DIMENSIONS

Hull material	Steel
Length overall	60.0 metres
Beam (overall)	10.6 metres
Draft (approx.)	3.0 metres

COMMUNICATION & SENSORS

Communication system	Secure/Non-secure voice and data over VHF, UHF, SATCOM and Sea Boat's Situational Awareness
Navigation	Integrated Bridge System including: Radars, 2 x ECDIS, 2 x Gyro Compass, Secure AIS, 2 x DGPS, EOSS and VDR
Sonar	Hull Mounted Mine Avoidance Sonar and Towed Array Sonar (Towed Reelable Active Passive Sonar (TRAPS))

ADDITIONAL FEATURES

Motion control system	Austal 2 x 3.25m ² Roll fins, 2 x 4.5m ² Trim Flaps
Combat Information System	CIC room with 4 consoles

DEPLOYABLE MISSION SYSTEMS

Sea boats	2 x 7.3 metre Gemini
Unmanned Vehicles	Aft flight deck accommodates compact to mid-sized Vertical Takeoff and Landing and fixed wing Unmanned Air Systems Aft deck also accommodates Mine Detection Unmanned Underwater Vehicle(s)

WEAPONS AND COUNTERMEASURES

Primary	2 x 12.5mm Machine Guns (forward)
Countermeasures	Water Cannon and Drone Countermeasure System

PROPULSION

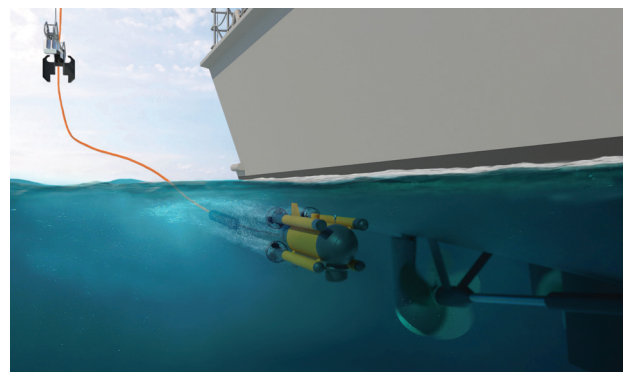
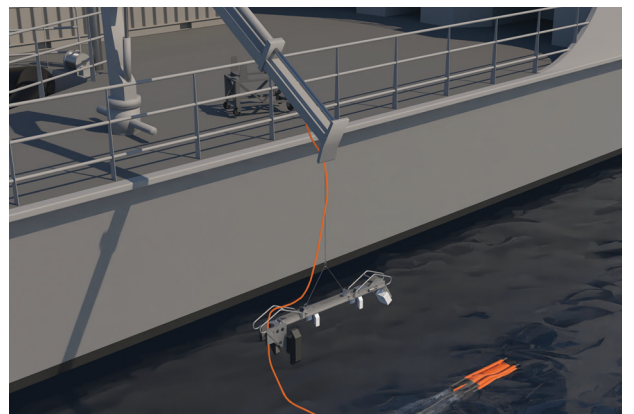
Main engines	2 x Caterpillar 3516C 2 x 2,525 kW @ 1,800 rpm
Gearboxes	2 x ZF 9055A
Propellers	2 x fixed pitch
Bow thruster	HRP 2001 TT(160 kW)

PERFORMANCE

Speed	23.5 knots
Range at 12 knots	2500 nautical miles

CLASSIFICATION

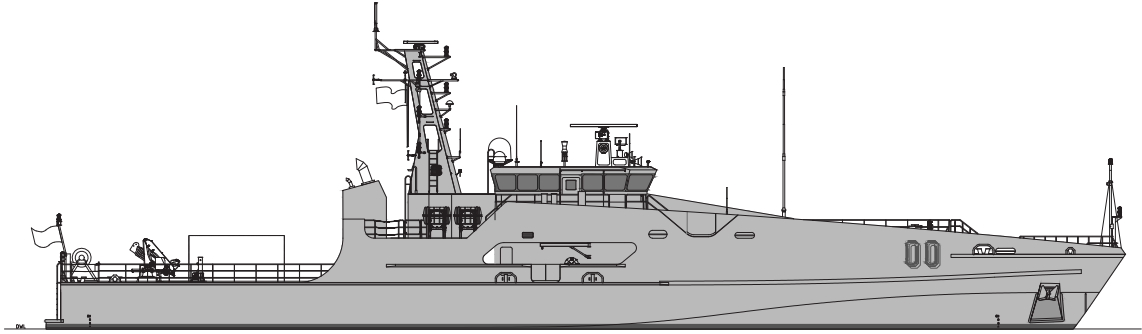
Det Norske Veritas
✱1A1 LC, PATROL, EO, BIS, RP, NAUT-HSC, RADHAZ, SAM



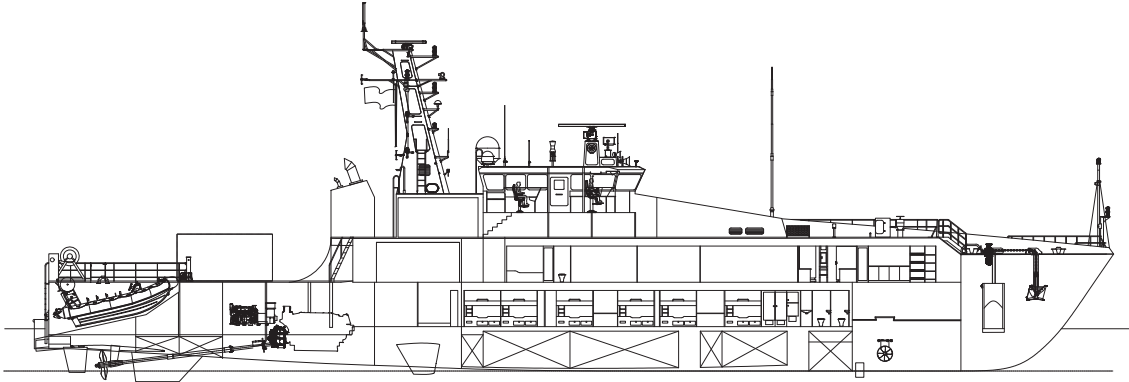
AUSTAL OFFSHORE PATROL 60

SUBSURFACE VARIANT

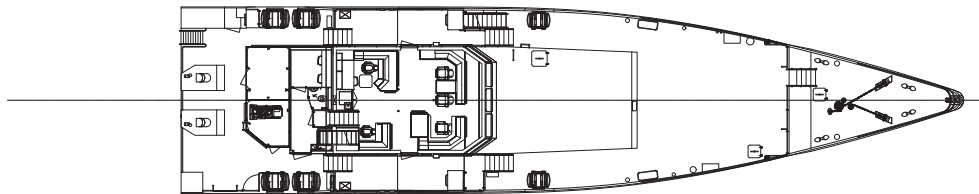
PROFILE



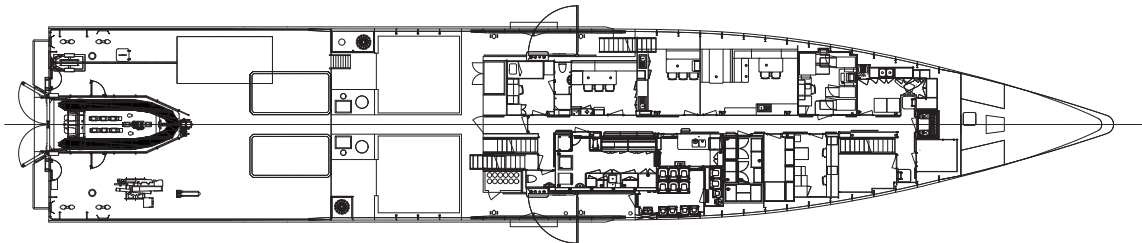
PROFILE @
CENTRELINE



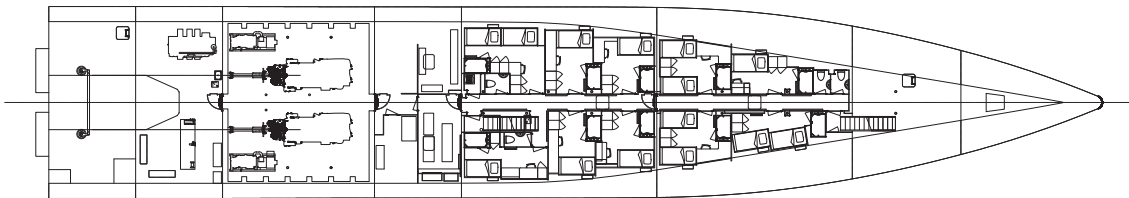
BRIDGE DECK



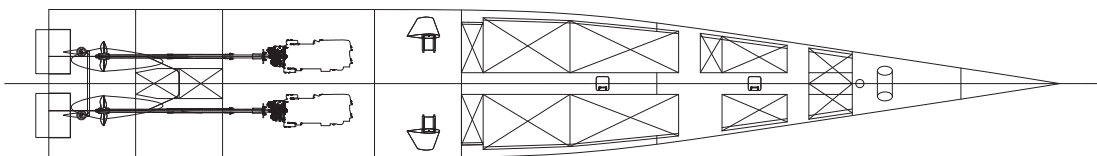
MAIN DECK



LOWER DECK



HULL



Subsurface variant shown with two engines fitted as standard